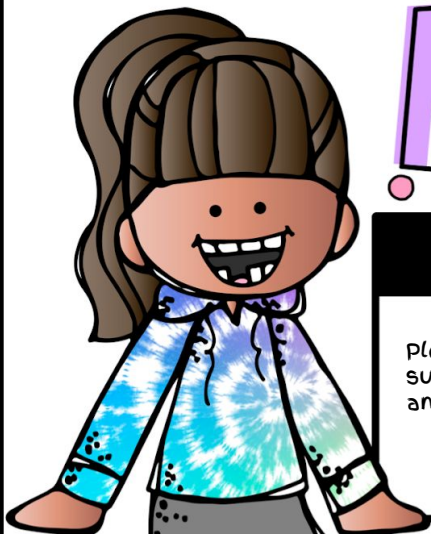


APRIL NEWS

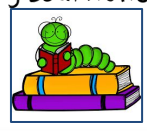


Reminders

Independent Reading:
Please make sure your child is independently reading for 30-40 minutes on a daily basis. We suggest making it part of their nightly bedtime routine! They should be reading both FICTION and NONFICTION books! Reading becomes stronger by reading!

The Second Grade Team:

Ms. Joy, Ms. Thomsen, and Ms. Williams



Important Dates

Friday, April 1st



-Start of Embrace the Amazing Month!

-Wear Blue in celebration of Autism Awareness Month!

Friday 4/8 -Spring Picture Day!



Tuesday 4/12 PTA Meeting 7pm

Spring Recess: Friday 4/15- Friday 4/22

School resumes Monday 4/25



Friday 4/29

Spirit Day- wacky sock Day!

Arbor Day



Reading and Writing Learning Focus

Reading: Bigger Books Mean Amping Up Reading Power- This upcoming unit focuses on series book reading and shoring up foundational skills such as fluency, sounding out tricky words, and boosting our stop and jots. Students will be working to grow as readers by developing their own ideas and theories about characters and the story plot all while supporting their thinking with text evidence.

Writing: From Scenes to Series: Realistic Fiction
This unit is designed to teach students how to tell and plan stories. Students will learn that characters in stories face problems, overcome these (with help from others or on their own), and then develop solutions. They will develop their own characters to use in the stories they create. They will deepen their partner work and continue to learn strategies to revise their writing. Children will be taught how to move from being accomplished storytellers to becoming accomplished story writers. The goal of the unit will be to write well-elaborated realistic fiction stories, aligned to the Priority Learning Standards.

Fundations, Math, and Content Learning Focus

Fundations:

In our upcoming units, kiddos will continue to explore vowel teams and the double vowel syllable. They will be learning the spelling options for the long e vowel teams and how to mark up double vowel syllables when combined with other syllable types in multisyllabic words.

Math:

Content: Social Studies

